



**forté**  
HEALTHCARE

# FINALÉ BEVELED SLIMLINE FALL PROTECTION FLOOR MAT

FORTÉ FINALÉ BED PROTECTORS RANGE

# FINALÉ FALL PROTECTION FLOOR MAT

Bevelled Slimline

---

The Bevelled Slimline Finalé Fall Protection has been designed to provide ultimate protection for patients at risk of falling from the bed surface without jeopardising on WH&S and Infection Control. This advanced new technology is an essential part of any facilities falls management program.

## FEATURES

**Overall Size:** 1800x700x40mm

**Core:** Dual Density, Impact Absorbing, Slim-Line Foam

- High Density Soft Interface
- Supportive EVA Foam Foundation
- Tri-fold Design - easy to carry & store
- Lightweight, great for manual handling concerns
- Beveled, to prevent trip hazard risks
- Slimline, low-profile with a re-inforced flat lay design - 40mm at maximum.
- Size meets the following relevant standards: VA 2014, Bowers et al 2008

**Cover:** Durable PVC3 Cover w/Non-Slip Patch

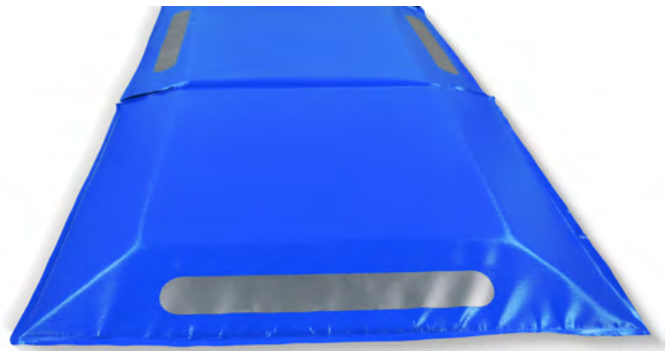
- Durable, Long Lasting PVC Coated Polyester
  - 630gsm
  - Provides Core Protection
  - Ultimate Durability
  - 100% waterproof to prevent ingress of fluid and infection
  - Fire retardant
  - Matte finish
  - Superior resistance to cleaning and disinfection chemicals
- High Performance Non-Slip/Anti-Skid Polyurethane Patch
  - Positioned on the underside of the mattress, Grips to floor surface
  - Vapour permeable/breathable
  - Resistant to body fluids, stain resistant
  - Wipe-clean, hygienic
  - Improves safety of care staff, Prevents mat from slipping/shifting
- Reflective Tape on all edges, to prevent trip hazard risks in poor lighting
- All Seams High Frequency Sealed and Welded
  - Electromagnetically fused seams means fluid cannot penetrate or soak through. The nature of the application of fall mats (used on the floor) is such that it is liable exposure to fluid spills and infection hazards
  - Ensuring spills and fluids can be completely wiped off and without lingering residue is important to ensuring a contamination free environment
  - Meets and exceeds infection control requirements
  - Reinforced with additional heavy duty stitching at stress points
  - No exposed sewn seams
- Fully Sealed & Enclosed
- Available in a wide variety of fabric colours - helps to distinguish between wards and ensure mats are not lost within facilities

**Australian Made by Forté Healthcare**





# IMAGES



# FABRIC COLOUR OPTIONS\*

ORANGE	
YELLOW	
WHITE	
RED	
LIGHT BLUE	
ROYAL BLUE	
GREEN	
GREY	
BLACK	
DARK BLUE	
PINK	
PURPLE	

\*PVC Colour options are subject to supplier stock & availability at time of order