

Start M4 XXL

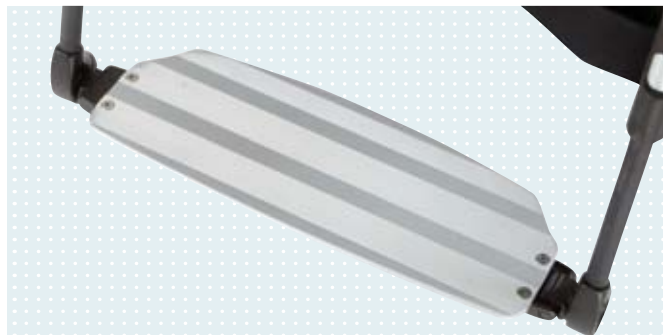
The robust lightweight wheelchair



The Start M4 XXL is the robust model among the lightweight wheelchairs. With its sturdy double crossbrace and the reinforced rear wheels, it can carry up to 160 kilograms and withstand extreme stress and strain.

The optional back stabiliser rounds out the wheelchair's features without compromising its foldability.

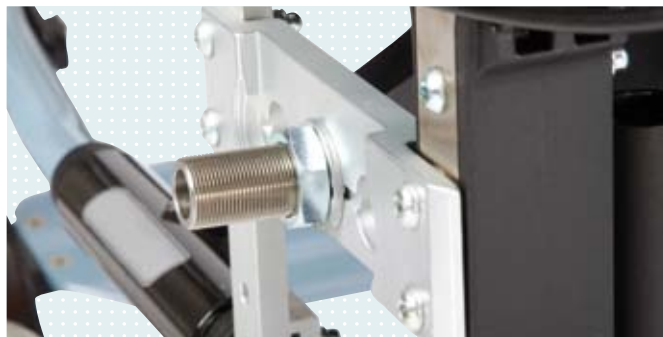
The rear wheel adapter of the Start M4 XXL allows the centre of gravity to be adjusted to meet different user needs.



- The continuous aluminium foot plate ensures greater stability and meets maximum space requirements.



- Enhanced safety when driving downhill - and the optional drum brake system for the attendant.



- The rear wheel adapter permits various wheelbase settings.

Options



• Start M4 with z10 push assist



• Optional swinging anti-tipper allows to overcome low obstacles without deactivation



• Back stabiliser improves stability and can be swung out of the way for folding



• Double crossbrace permits a maximum load capacity of 160 kg

Product Features

- Aluminium tube frame
- All main component groups are attached with screws
- Reinforced rear wheels and back tubes
- Optional stabiliser bar
- Standardised caster forks for all wheel sizes
- Durable upholstery
- Narrow folding size with folding fixture
- Sturdy double crossbrace
- Optimised knee lever wheel lock



Basic Technical Data

| | |
|------------------|---|
| Load capacity | 160 kg |
| Weight | From 17.5 kg |
| Seat width | 43 cm - 58 cm |
| Seat depth | 43 cm, 46 cm, 49 cm |
| Back height | 40 cm - 47.5 cm |
| Seat height | Front 40 cm - 51 cm Rear 38 cm - 50 cm |
| Lower leg length | 27 cm - 47 cm |

Start Options



• Transport wheels



• Plug-on anti-tipper



• Various steering caster sizes



• Caster fork, short/long



• One-arm drive with double push ring



• Pneumatic tyres 1 3/8"



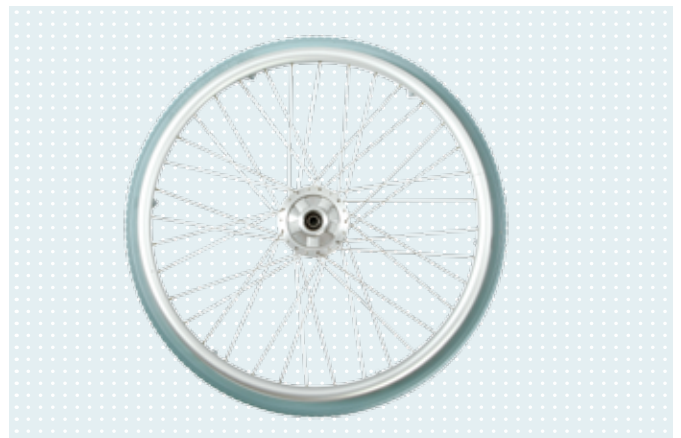
• Crutch holder



• Swinging anti-tipper



• Standard rear wheel, 22" and 24"



• Rear wheel with drum brake, 22" and 24"



• RightRun pneumatic tyres, fine tread, 1"



• PU tyres 1 3/8"

Start Options



• Push ring, aluminium, silver anodized



• Push ring, stainless steel, polished



• Silicone push ring cover



• Knee lever wheel lock, standard



• Plug-on wheel lock lever extension



• Back with lumbar curve, standard



• High-pressure air pump, 14 bar



• Airman pump, battery-operated



• Knee lever wheel lock for user and attendant



• Knee lever wheel lock for one-handed operation, right/left



• Back angle adjustment, 30°
(only back height 47.5 cm possible)



• Folding back
(only back height 47.5 cm possible)

Start Options



• Back upholstery, standard



• Back upholstery, adaptable



• Push handles, standard



Telescoping push handles
(not available in combination with 30° back angle adjustment
or folding back)



• Lateral/lumbar pad set



• Standard side panel
(arm rest 300 mm)



• "The Back" – adjustable stable back



• Backster – fixed back
(angle adjustment from 0° to 15°)



• Side thoracic support, right/left



• Back stabiliser for push handles



• Standard side panel
(arm rest 365 mm)

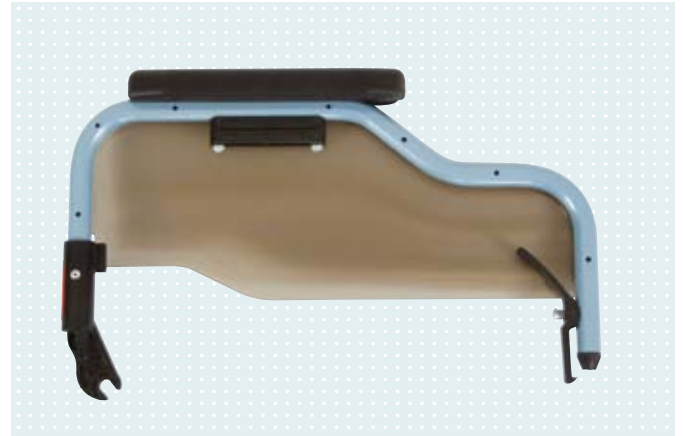


• Plug-on side panel

Start Options



• Side panel, height-adjustable
(arm rest 300 mm)



• Desk side panel, stepped



• Segmented foot rest, angle-adjustable with plastic foot plate



• Continuous foot rest, angle-adjustable with aluminium foot plate



• Heel band for individual foot rests



• Lap belt with plastic buckle



• Tray



• Various seat cushions for best seating comfort



• Leg rest, elevating, without automatic length adjustment



• Transtibial residual limb support



• Lap belt with metal buckle



• Tool kit

Start Options



• Headrest



• Clinical installation kit for headrest



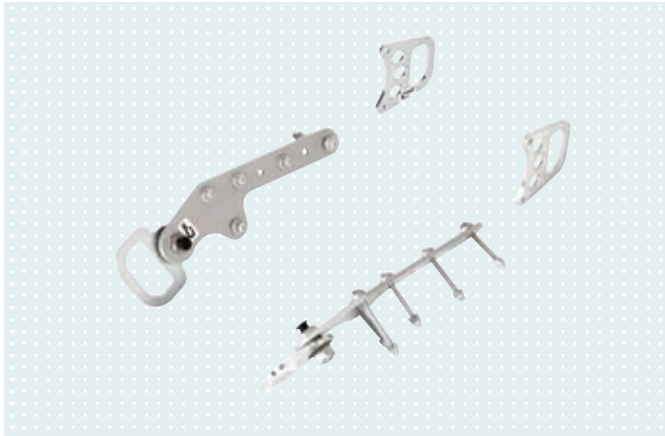
• Spoke protector with decor



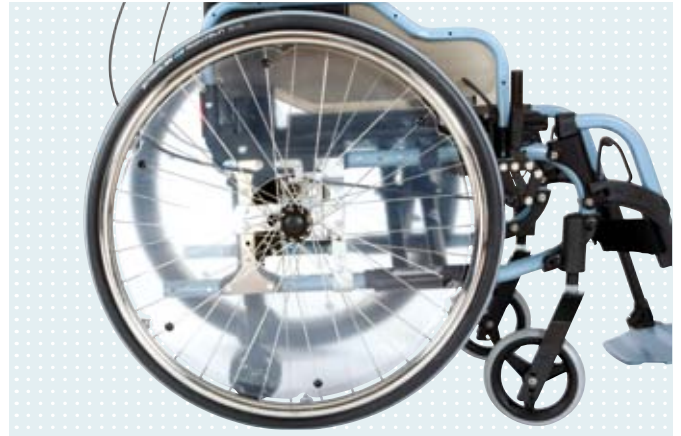
• e-support add-on drive
(servo auxiliary drive operated via the push rings)



• z10-ce add-on drive
(adaptable add-on drive for the user)



• Anchor point kit for transportation in a motor vehicle (max. load capacity 100 kg)



• Spoke protector, transparent



• z50 add-on drive (power add-on drive with joystick control, 12 Ah or 16 Ah)



• z10 add-on drive (adaptable add-on drive for the attendant (push assist))

Start Options Matrix

| | Start M0 Basic | Start M1 Intro | Start M2 Effect | Start M3 Hemi | Start M4 XXL | Start M5 Comfort |
|--|-------------------|-------------------|--------------------|------------------|-----------------|---------------------|
| Use of add-on drives | | | | | | |
| e-support (servo auxiliary drive operated via the push rings) | | | • | | | • |
| z50 (power add-on drive with joystick control, 12 Ah or 16 Ah) | | | • | | | • |
| z10 (adaptable add-on drive for the attendant (push assist)) | | | • | • | • | • |
| z10ce (adaptable add-on drive for the user) | | | • | • | • | • |
| Frame options | | | | | | |
| Transport wheels | • | • | • | • | • | • |
| Plug-on anti-tipper | • | • | • | • | • | • |
| Crutch holder | • | • | • | • | • | • |
| Swinging anti-tipper | | | • | • | • | • |
| Caster wheels (dimensions in mm) | | | | | | |
| 5" solid rubber (130 x 33) | | | | • | • | • |
| 5.5" soft (140 x 40) | | | • | • | • | • |
| 6" pneumatic (150 x 30) | | | • | • | • | • |
| 6" solid rubber (150 x 27) | • | • | • | • | • | • |
| 7" pneumatic (180 x 45) | | | • | • | • | • |
| 7" solid rubber (180 x 45) | | | • | • | • | • |
| 8" pneumatic, narrow (long caster fork required) (200 x 30) | | | • | • | • | • |
| 8" pneumatic, wide (long caster fork required) (200 x 50) | | | • | • | • | • |
| 8" solid rubber, narrow (long caster fork required) (200 x 30) | | | • | • | • | • |
| 8" PU tyres, wide (long caster fork required) (200 x 50) | • | • | • | • | • | • |
| Caster forks | | | | | | |
| Caster fork, long | • | • | • | • | • | • |
| Caster fork, short | | • | • | • | • | • |
| Hemi kit (for smaller anterior seat height and wider foot space) | | | | • | | |
| Rear wheel size | | | | | | |
| 22" | • | • | • | • | • | • |
| 24" | • | • | • | • | • | • |
| Wheelbase | | | | | | |
| Short/active | | • | • | • | • | • |
| Long/passive | • | | • | • | • | • |
| Wheel camber | | | | | | |
| 0° | | • | • | • | • | • |
| 2.5° | | | | | | • |

| | Start M0 Basic | Start M1 Intro | Start M2 Effect | Start M3 Hemi | Start M4 XXL | Start M5 Comfort |
|---|-------------------|-------------------|--------------------|------------------|-----------------|---------------------|
| Rear wheel rim | | | | | | |
| Standard | • | • | • | • | • | • |
| Rear wheel with drum brake/attendant | • | • | • | • | • | • |
| One-arm drive with double push ring right/left (only available in combination with 1 3/8" tyres) | | | • | • | | • |
| Tyres | | | | | | |
| Pneumatic tyres 1 3/8" | | | • | • | • | • |
| RightRun pneumatic tyres, fine tread, 1" | | | • | • | | • |
| PU tyres, 1" (24" tyres only) | | | • | | | • |
| PU tyres 1 3/8" | • | • | • | • | • | • |
| Push rings | | | | | | |
| Push ring, aluminium, silver anodised, high | • | • | • | • | • | • |
| Push ring, polished stainless steel, high | | | • | • | • | • |
| Rear wheel options | | | | | | |
| High-pressure air pump, 14 bar | | • | • | • | • | • |
| Airman pump, battery-operated | | • | • | • | • | • |
| Silicone push ring cover | | • | • | • | • | • |
| Wheel lock | | | | | | |
| Knee lever wheel lock, standard | • | • | • | • | • | • |
| Knee lever wheel lock for user and attendant | | • | • | • | • | • |
| Knee lever wheel lock for one-handed operation, right/left | | | | • | | • |
| Wheel lock options | | | | | | |
| Plug-on wheel lock lever extension | | • | • | • | • | • |
| Back system | | | | | | |
| Back with lumbar curve, standard | • | • | • | • | • | • |
| Back, straight | | | | • | | |
| Back angle adjustment 30° (only available with BH 47.5 cm) | | • | • | • | | • |
| Back, folding (only available with BH 47.5 cm) | | | • | • | | • |
| Back height | | | | | | |
| 40 cm | • | | | • | • | • |
| 42.5 cm | | • | • | • | • | • |
| 45 cm | | | | • | • | • |
| 47.5 cm | • | | • | • | • | • |

Start Options Matrix

| | Start M0 Basic | Start M1 Intro | Start M2 Effect | Start M3 Hemi | Start M4 XXL | Start M5 Comfort |
|---|-------------------|-------------------|--------------------|------------------|-----------------|---------------------|
| Back upholstery | | | | | | |
| Standard | • | • | • | • | • | • |
| Adaptable | | | • | • | • | • |
| "The Back" (adjustable stable back) | | | • | • | | • |
| Backster (fixed back) angle adjustment 0°/5°/10°/15° | | | • | • | | • |
| Without | | | • | • | • | • |
| Push handles | | | | | | |
| Standard | • | • | • | • | • | • |
| Telescoping (not available in combination with 30° back angle adjustment or folding back) | • | | • | • | • | • |
| Back options | | | | | | |
| Side thoracic support | | | • | • | | • |
| Back stabiliser for push handles | | | • | • | • | • |
| Back extension for "The Back" | | | • | • | | • |
| Fixed pad, large | | | • | • | | • |
| Fixed pad, small | | | • | • | | • |
| Fold-away pad | | | • | • | | • |
| Lateral/lumbar pad set | | | • | • | | • |
| Side panels | | | | | | |
| Side panel, standard, 300 mm arm rest | • | • | • | • | • | • |
| Side panel, standard, 365 mm arm rest | | | • | • | • | • |
| Plug-on side panel | | | • | • | • | • |
| Side panel, height-adjustable, arm rest 300 mm | • | • | • | • | • | • |
| Desk side panel, stepped | | • | • | • | • | • |
| Side panel options | | | | | | |
| Tray | | • | • | • | • | • |
| Swivel unit for channel forearm pads | • | | • | • | | |
| Seat upholstery | | | | | | |
| Upholstery, standard | • | • | • | • | • | • |
| "The Seat" | | | • | • | | |
| Without | | | • | • | • | • |

| | Start M0 Basic | Start M1 Intro | Start M2 Effect | Start M3 Hemi | Start M4 XXL | Start M5 Comfort |
|--|-------------------|-------------------|--------------------|------------------|-----------------|---------------------|
| Seat cushion | | | | | | |
| Standard seat cushion 3 cm/5 cm | • | • | • | • | • | • |
| Cubic Foam seat cushion (thickness 5 cm) | | | • | • | • | • |
| Combi Foam seat cushion (thickness 5 cm) | | | • | • | • | • |
| Combi3S seat cushion (thickness 6.5 cm) | | | • | • | | • |
| Evolight seat cushion (thickness 6 cm) | | | • | • | • | • |
| Evolight Pro seat cushion (thickness 8 cm) | | | • | • | | • |
| Foot rests | | | | | | |
| Segmented foot rest, angle-adjustable, plastic foot plates | • | | • | • | • | • |
| Segmented foot plate, aluminium, 16 cm | | | • | • | | |
| Continuous foot rest, angle-adjustable | | | | | • | • |
| Leg rest, elevating, without automatic length adjustment, pair | • | | • | • | • | • |
| Leg rest, elevating, without automatic length adjustment, right (plus standard foot rest left) or left (plus standard foot rest right) | • | • | • | • | • | • |
| Transtibial residual limb support, right (plus standard foot rest left) or transtibial residual limb support, left (plus standard foot rest right) | | | • | • | • | • |
| Transtibial residual limb support (pair) | | | • | • | • | • |
| Foot rest options | | | | | | |
| Heel band for segmented foot rests | • | | • | • | • | • |
| Additional Options | | | | | | |
| Lap belt | • | • | • | • | • | • |
| Tool kit | | | • | • | • | • |
| Headrest | | | • | • | • | • |
| Clinical installation kit for headrest | | | • | • | • | • |
| Headrest installation kit, multi-axis, offset | | | • | • | • | • |
| Anchor point kit for transportation in a motor vehicle (max. load capacity 100 kg) | | • | • | • | | • |
| Spoke protectors | | | | | | |
| Spoke protector, transparent | | • | • | • | • | • |
| Spoke protector with decor | | | • | • | • | • |
| Frame colour | | | | | | |
| Anthracite metallic | | | • | • | • | • |
| Deep black glossy | | | • | • | • | • |
| Ice blue | | | • | • | • | • |
| Silver metallic | • | • | • | • | • | • |
| White pearl | | | • | • | • | • |
| Saturn blue metallic | | | • | • | • | • |

Otto Bock HealthCare GmbH
Max-Näder-Straße 15, 37115 Duderstadt/Germany
T +49 5527 848-1590 · F +49 5527 848-1676
reha-export@ottobock.de · www.ottobock.com