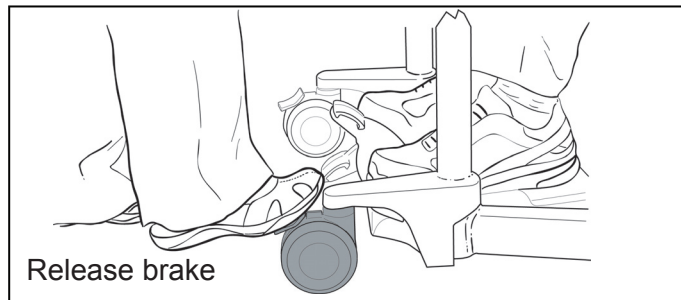
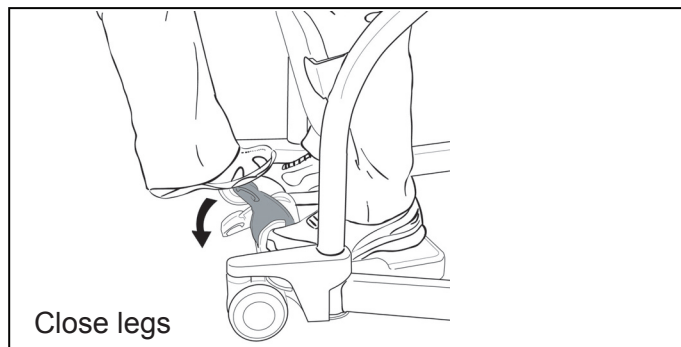
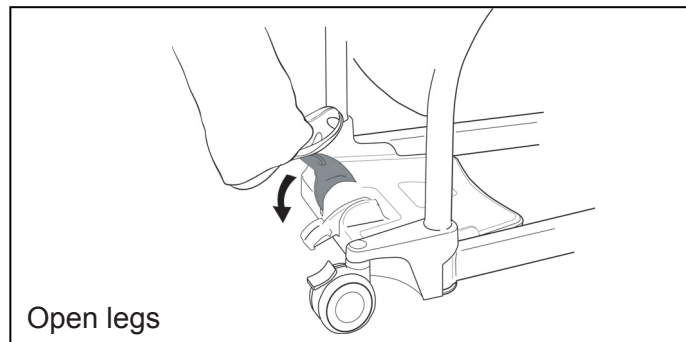


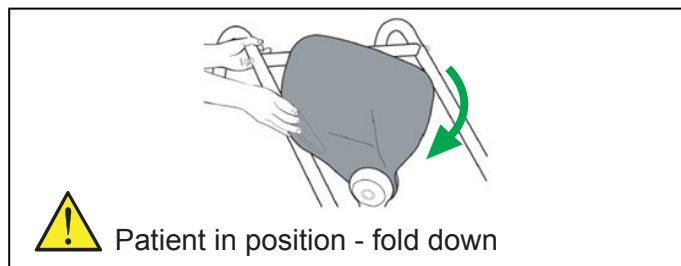
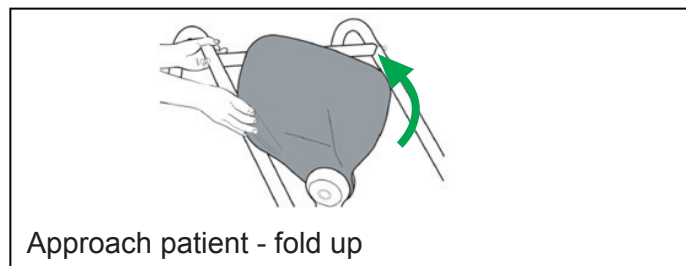
Apply and release brake



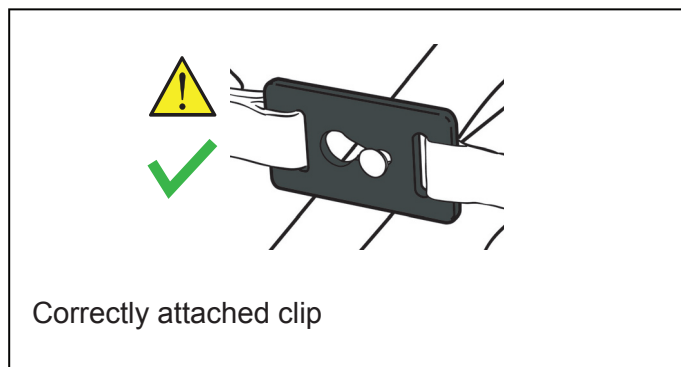
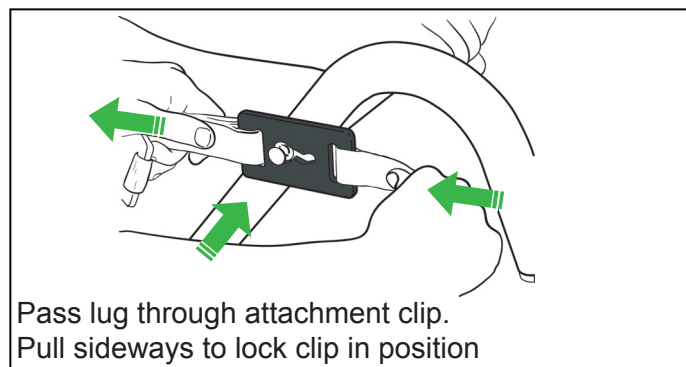
Open and close legs



Pivot cushions



Sling attachment lugs



Cleaning and disinfection

Wipe it down with a damp cloth using warm water and a disinfectant cleaner.

Disinfectant wipes, impregnated with a 70 % v/v solution of isopropyl alcohol, can also be used.

Rub the lift vigorously when using wipes.

Do not use phenol, chlorine or any other type of solvent that may damage the finish.