

Spex® Standard Contour Cushion



CLINICAL

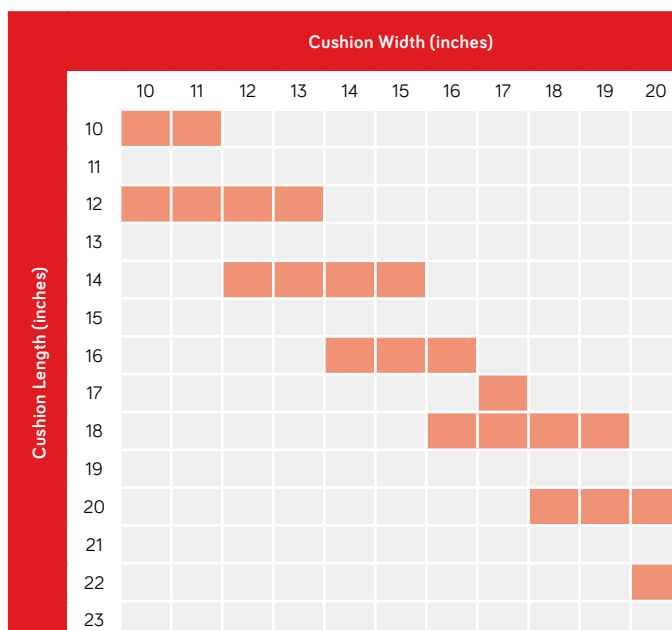
Designed for the user who has moderate to severe postural needs and pressure requirements. Excellent choice for individuals who:

- Have changing postural needs over time
- Have a symmetrical or asymmetrical sitting posture that requires correction or control
- Require pelvic support and pressure relief/distribution
- Require a high degree of pelvic stability and specific contouring
- Need moderate control of abduction or adduction propensities

FUNCTIONAL

- Created as the solution-solver for asymmetrical postures
- Strategic contouring pads offer complete customisations on-the-spot for a perfect fit for the client
- Gel-foam ischial well evenly distributes pressure under the pelvis
- Coccyx channel for enhanced pressure relief (for sizes 16" +)
- Dual-layer cover reduces shear forces, and breathable air-mesh on cushion sides counters moisture
- Inner incontinence cover included
- Customisable for many requirements such as leg length discrepancies

CUSHION SIZE CHART



- Red squares are standard sizes.
- Non-standard or custom sizes are available on request.

CUSHION DETAILS

Width	Height	Capacity	Trough Height	Product Weight
10"	2"	200lbs (90kg)	30mm	(16x16) 1.5kg
11"-15"	2.5"			
16"-17"	2.75"	350lbs (160kg)		
18"-20"	3"			

PRODUCT PERFORMANCE

Pressure Care	Red	Red	Red	4
Positioning	Red	Red	Red	4
Lateral Stability	Red	Red	3	
Offloading	Red	Red	Red	4
Changing Needs	Red	Red	Red	4

- Note: This is a guide only and ratings are dependent on correct use of product.

Spex® High Contour Cushion

The Spex® High Contour Cushion offers enhanced thigh and abductor support. Key solution to positioning and levelling the pelvis correctly and effectively. Accomplish on-the-spot modifications with the cushion's strategic positioning base.

CLINICAL

Designed for the user who has moderate to severe postural needs and pressure requirements. Excellent choice for individuals who:

- Need high control of abduction or adduction propensities
- Have changing postural needs over time
- Have a symmetrical or asymmetrical sitting posture that requires correction or control
- Require pelvic comfort and pressure relief/distribution
- Require a high degree of pelvic stability and specific contouring

FUNCTIONAL

- Positioning base promotes anterior pelvic tilt and active reach to engage in activities
- Created as the solution-solver for asymmetrical postures
- Strategic contouring pads offer complete customisations on-the-spot for a perfect fit for the client
- Gel-foam ischial well evenly distributes pressure under the pelvis
- Coccyx channel for enhanced pressure relief (for sizes 16" +)
- Dual-layer cover reduces shear forces, and breathable air-mesh on cushion sides counters moisture
- Inner incontinence cover included
- Customisable for many requirements such as leg length discrepancies



Bespoke modifications can be scripted according to needs of the user.



SPEX® STRATEGIC POSITIONING BASE



Configure to suit many different postures of persons with disabilities or sitting issues. By adjusting the strategic positioning base, the cushion surface is contoured to improve overall posture, pelvic alignment, sitting ability, comfort and pressure reduction.



PROMOTES ANTERIOR PELVIC TILT AND ACTIVE REACH TO ENGAGE IN ACTIVITIES

Cushion can be wedged to slope to front with cells added at rear and removed at front.



MANAGEMENT & POSITIONING

Build cells up under thighs for enhanced pre-ischial support and control.



PELVIC ROTATION

To help control pelvis from rotating, create a build-up under the affected leg (in front of the ischial).



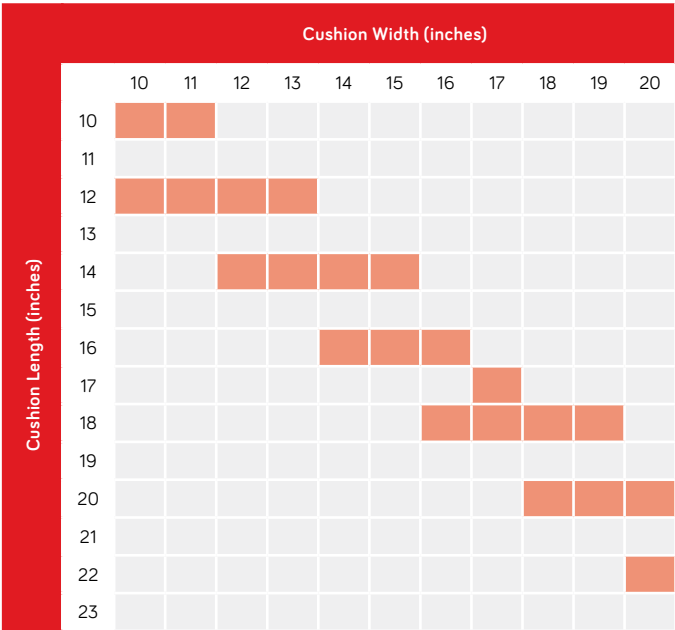
Unique dual-layer **SHEAR REDUCTION** fabric surface

Accentuated thigh/adductor and abductor **CONTROL AND SUPPORT**

CUSTOMISE for all sitting postures

Maintain **PELVIC STABILITY** with adjustable positioning base

CUSHION SIZE CHART



- Red squares are standard sizes.
- Non-standard or custom sizes are available on request.

CUSHION DETAILS

Width	Height	Capacity	Trough Height	Product Weight
10"	2"	200lbs (90kg)	50mm	(16x16) 1.6kg
11"-15"	2.5"			
16"-17"	2.75"	350lbs (160kg)		
18"-20"	3"			

PRODUCT PERFORMANCE

Pressure Care	Red	Red	Red	4	
Positioning	Red	Red	Red	4	
Lateral Stability	Red	Red	Red	4	
Offloading	Red	Red	Red	4	
Changing Needs	Red	Red	Red	4	

- Note: This is a guide only and ratings are dependent on correct use of product.

Spex® SuperHigh Contour Cushion

Using the proven Spex® strategic positioning base technology, the SuperHigh contour cushion creates an optimum pelvic foundation for the user that requires extra pelvic and hip support.

The medial thigh support combined with lateral thigh supports maximizes the user stability, providing greater balance and support on upper body. The SuperHigh contour cushion's body-hugging nature delivers comfort and daily sitting relief; while the 3D breathable mesh fabric helps in reducing moisture and temperature.

CLINICAL

Designed for the user who has moderate to severe positioning requirements. Excellent choice for individuals who:

- Require extra pelvic, hip stability, and specific contouring
- Have muscle tone patterns that require sufficient thigh lateral control. Thigh support is higher for alignment - refer measurement table
- If extremity support can't be maintained through the use of external thigh laterals and/or if installing thigh laterals can't be used, the SuperHigh contour cushion will provide that needed support and stabilisation
- Have a symmetrical or asymmetrical sitting posture that requires correction or control/accommodation

FUNCTIONAL

- No maintenance required. A reliable, peace-of-mind solution!
- Strategic contouring pads offer complete customisations on-the-spot for a perfect fit for the client
- Removable lateral rigidizers which add extra thigh support/alignment
- Gel-foam ischial well evenly distributes pressure under the pelvis
- Coccyx channel for enhanced pressure relief (for sizes 16"+)
- Dual-layer cover reduces shear forces, and breathable air-mesh on cushion sides counters moisture
- Inner incontinence cover included
- Customisable for many requirements such as leg length discrepancies
- Not compatible with Thigh Supports or Medial Thigh Supports

Bespoke modifications can be scripted according to needs of the user.



Full length contouring customisation without 50mm rear step (shown in red on right) can be made with no additional cost.

1111-0304-000



Spex® STRATEGIC POSITIONING BASE



Configure to suit many different postures of persons with disabilities or sitting issues. By adjusting the strategic positioning base, the cushion surface is contoured to improve overall posture, pelvic alignment, sitting ability, comfort and pressure reduction.



PROMOTES ANTERIOR PELVIC TILT AND ACTIVE REACH TO ENGAGE IN ACTIVITIES

Cushion can be wedged to slope to front with cells added at rear and removed at front.



MANAGEMENT & POSITIONING

Build cells up under thighs for enhanced pre-ischial support and control.

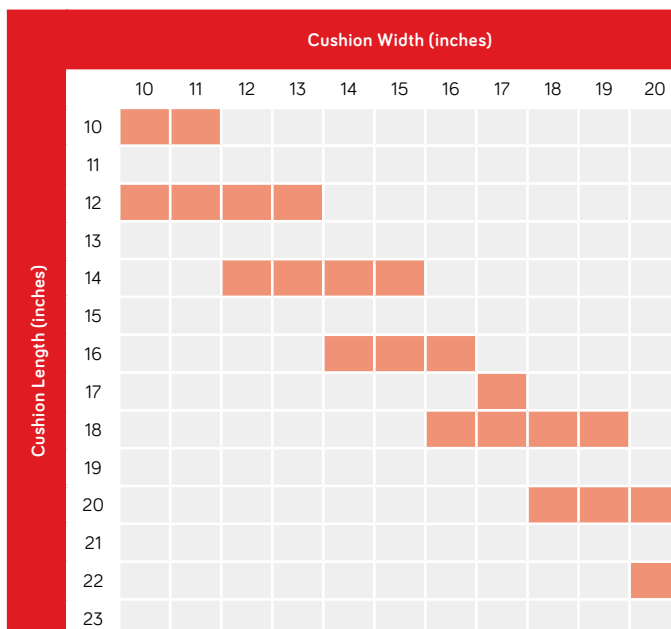


PELVIC ROTATION

To help control pelvis from rotating, create a build-up under the affected leg (in front of the ischial).



CUSHION SIZE CHART



- Red squares are standard sizes.
- Non-standard or custom sizes are available on request.
- SuperHigh cushion not compatible with Thigh Supports or Medial Thigh Supports

CUSHION DETAILS

Width	Height	Capacity	Trough Height	Product Weight
10"	2"			
11"-13"	2.5"	200lbs (90kg)	80mm	(16x16)
14"-15"	2.5"			
16"-17"	2.75"	350lbs (160kg)	100mm	2.0kg
18"-20"	3"			

PRODUCT PERFORMANCE

Spex® SuperHigh

Pressure Care				4	
Positioning				4	
Lateral Stability					5
Offloading				4	
Changing Needs			3		

Spex® SuperHigh (full length contouring)

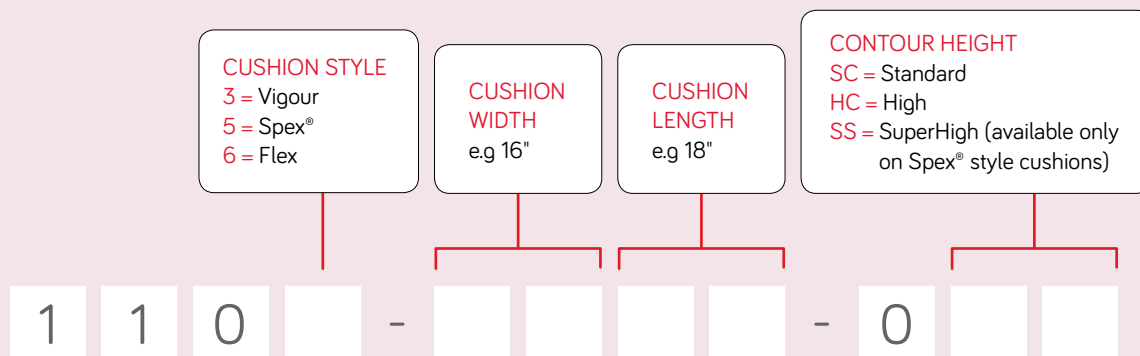
Pressure Care			3		
Positioning				4	
Lateral Stability					5
Offloading			3		
Changing Needs			3		

- Note: This is a guide only and ratings are dependent on correct use of product.

Codes for Standard Sized Cushions

Our cushion codes are meaningful!

Here's how to generate a product code to place your order.

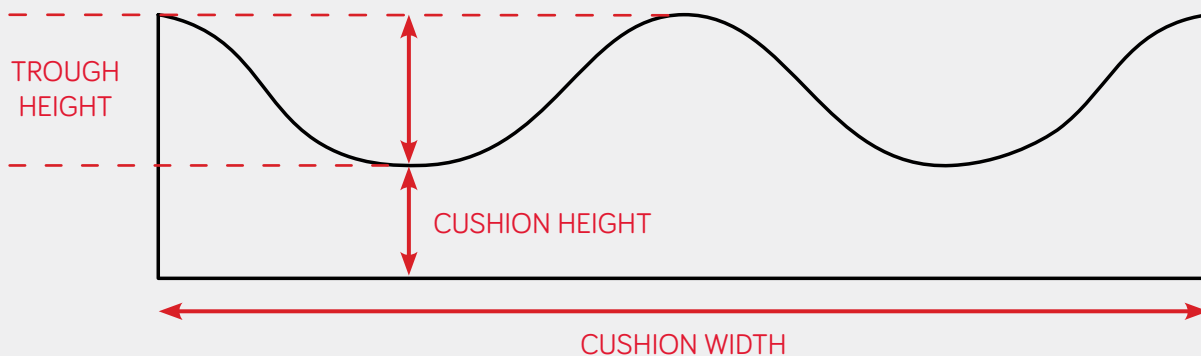


EXAMPLE

A standard Contour Spex® cushion of width 18" and length 20", would have the code 1105-1820-OSC.

SPEX® & VIGOUR CUSHION MEASUREMENTS GUIDE

This FRONT-VIEW of a Spex®/Vigour cushion, shows the different measurements referred to on the subsequent product pages.



Stand out from the crowd!

Upgrade your cushion with a splash of colour, for no extra cost!

We offer 5 colour options for our Spex® cushion outer covers alternative to the standard black fabric. Simply add the upgrade codes to your cushion order.



Calypso Pink
1111-0491-028



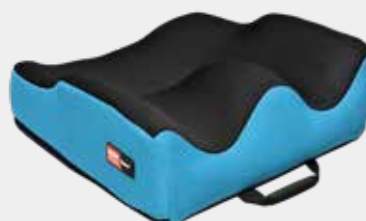
Chilli Red
1111-0491-022



Granite Grey
1111-0491-090



Mango Orange
1111-0491-030



Ocean Blue
1111-0491-060

Spare cushion covers

All our cushions come standard with an inner incontinence cover and an outer cover, however if you would like a spare incontinence or outer cover, these are available.

See our scripting and ordering guide for ordering codes or get in touch with your local Spex® distributor.

