

NEW Spex® Flex Cushion

Creating possibilities for complex sitting postures!

Flex cushion implements a truly adaptable and easy approach for even the hardest-to-solve cushion requirements for users with complex postures.

As its name describes, Flex has been designed to fulfil the postural requirements of wheelchair users who present with limited hip flexion. Up-to-date research shows that a considerable number of clients with cerebral palsy at GMFCS level V, present with asymmetric limited hip flexion. This condition must be ruled out or compensated as it has been linked to the development of other conditions like pelvic obliquity, trunk asymmetry, scoliosis, and windswept hip distortion (Ágústsson, A. et al, 2017).

Considering a lack of products available that can support clients with symmetric or asymmetric limited hip flexion, and considering the negative impact that this can have on people's posture and function, we have developed this superior, comfortable, pressure relieving, stable and highly configurable cushion able to address even the most challenging postural requirements.

Every Flex comes with an easily configurable strategic positioning base. The innovative and clinical benefits of the pads and wedges allows the prescribing clinician to achieve a result on-the-spot whilst having the peace of mind that its able to change for future unseen posture changes.

Flex has a unique cover design which can change its shape. This ensures that once all the adaptations are done to the inner foam unit, the incontinence and outer covers are manipulated for a comfortable fit.



CLINICAL APPLICATIONS

Excellent choice for individuals who:

- Have symmetrical or asymmetrical limited hip flexion
- Have internal hip rotation with tight hamstrings on one side
- Require pelvic and thighs pressure distribution due to asymmetric sitting posture
- Have changing postural needs over time
- Require a high degree of pelvic stability and specific contouring

FUNCTIONAL

- Positioning base primarily accommodates lack of hip flexion up to 20° but due to its innovative positioning base it can support ruling out other associated deformities as pelvic obliquity, windsweeping, hip abduction, hip internal rotation with tight hamstrings and even lack of hip extension.
- Strategic positioning base, pads and wedges offer complete customisations on-the-spot for a perfect fit for the user
- Bevelled front edge allow for knee contractures
- The exceptional combination of top foam overlays guarantees pressure distribution throughout the complete surface
- Outer breathable cover and inner incontinence cover included
- Customisable for individual requirements such as higher thigh supports, leg length discrepancies, among others.



FLEX CUSHION AND ITS INNOVATIVE POSITIONING BASE



Strategic positioning base offers on-the-spot customisations to accommodate even the most complex postural needs.



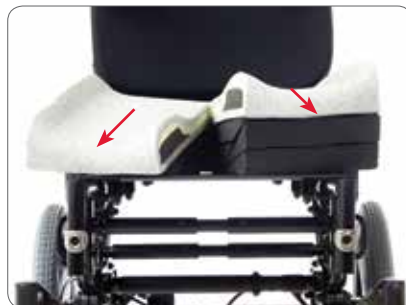
Asymmetric limited hip flexion is achieved by removing one or more front wedges from that side, depending on the angle required.



Lack of hip flexion on one side with lack of hip extension on the other is now possible to be compensated by changing the wedges from one side to the other. If pelvic obliquity is present, positioning pads provided with the cushion must be adjusted as well.



Symmetric limited hip flexion is achieved by removing one or more front wedges from both sides, depending on the angle required.

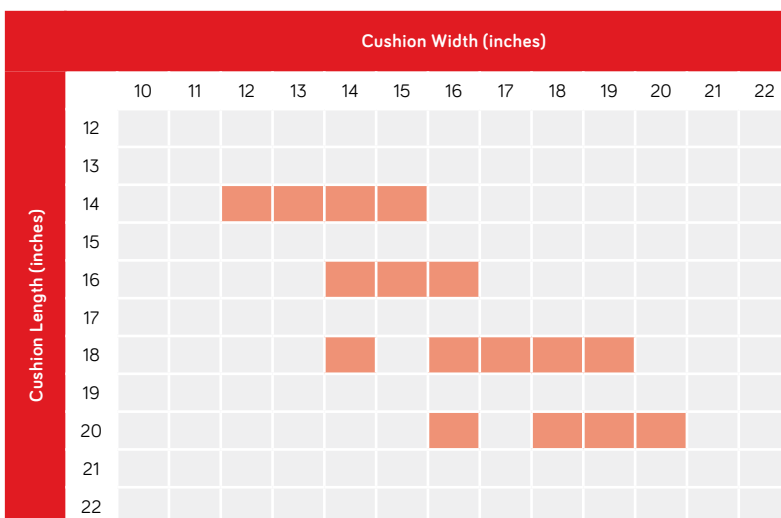


If hip abduction needs to be addressed, the frontal segments of the cushions can be pulled apart and locked in place with an additional wedge (provided).



If a moderate windsweeping needs to be accommodated, the frontal segments of the cushion can be slightly angled.

CUSHION SIZE CHART



- Red squares are standard sizes.
- Non-standard or custom sizes are available on request.
- Standard Contour Flex Cushion is default option (as pictured). SuperHigh Contour available upon request (non-trial option).

CUSHION DETAILS

Length	Height	Capacity	Trough Height (mm)		Product Weight
			Std	High	
14"-15"	4.7"	Width < 16" 200lbs (90kg)	30	50	(16x16)
16"					
17"-20"	5.1"	Width > 16" 350lbs (160kg)			1.5kg

PRODUCT PERFORMANCE

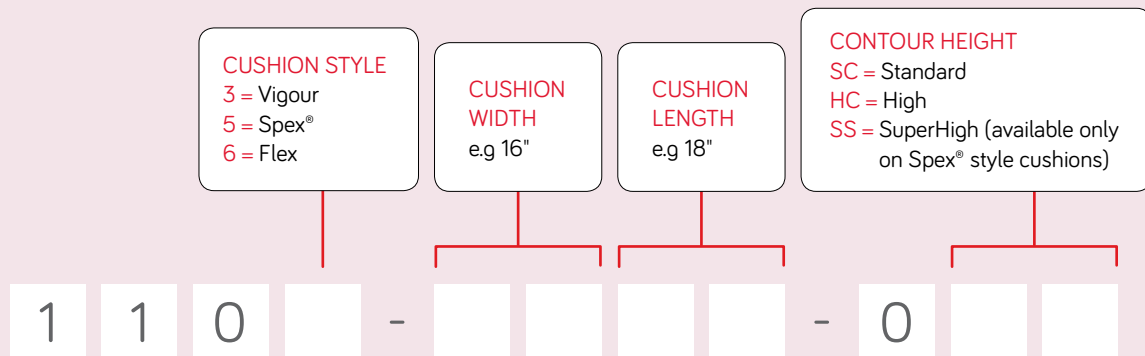
Pressure Care				4
Positioning				5
Lateral Stability			4	
Offloading				5
Changing Needs				5

- Note: This is a guide only and ratings are dependent on correct use of product.

Codes for Standard Sized Cushions

Our cushion codes are meaningful!

Here's how to generate a product code to place your order.

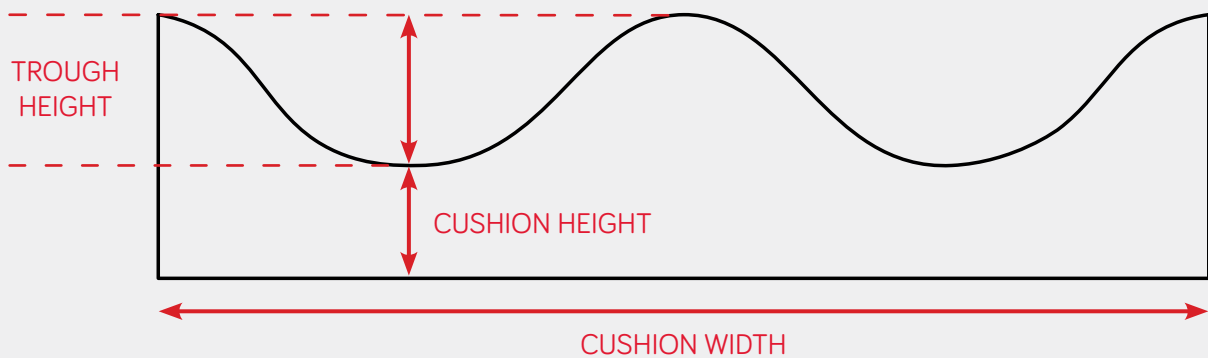


EXAMPLE

A standard Contour Spex® cushion of width 18" and length 20", would have the code 1105-1820-OSC.

SPEX® & VIGOUR CUSHION MEASUREMENTS GUIDE

This FRONT-VIEW of a Spex®/Vigour cushion, shows the different measurements referred to on the subsequent product pages.



Stand out from the crowd!

Upgrade your cushion with a splash of colour, for no extra cost!

We offer 5 colour options for our Spex® cushion outer covers alternative to the standard black fabric. Simply add the upgrade codes to your cushion order.



Calypso Pink
1111-0491-028



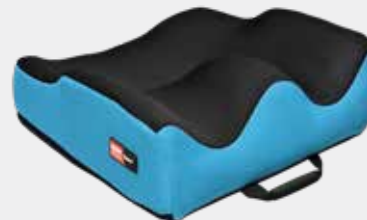
Chilli Red
1111-0491-022



Granite Grey
1111-0491-090



Mango Orange
1111-0491-030



Ocean Blue
1111-0491-060

Spare cushion covers

All our cushions come standard with an inner incontinence cover and an outer cover, however if you would like a spare incontinence or outer cover, these are available.

See our scripting and ordering guide for ordering codes or get in touch with your local Spex® distributor.

